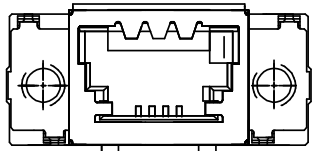
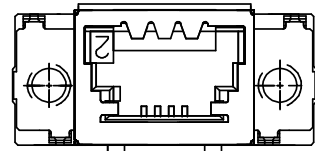


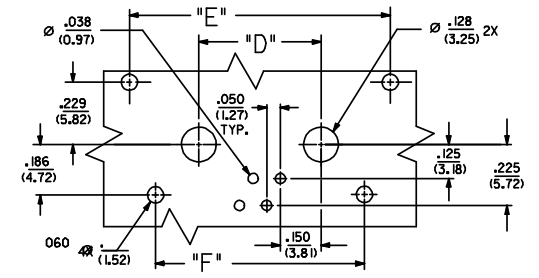
NON-KEYED VERSION A-71505-00**		KEYING OPTION "1" A-71505-01**		KEYING OPTION "2" A-71505-02**		CKT.	DIM. "A"		DIM. "B"		DIM. "C"		DIM. "D"		DIM. "E"		DIM. "F"	
E.D.P. NUMBER	ENG. NUMBER	E.D.P. NUMBER	ENG. NUMBER	E.D.P. NUMBER	ENG. NUMBER		SIZE	MM	IN.	MM	IN.	MM	IN.	MM	IN.	MM	IN.	MM
15-83-0904	A-71505-0004	15-83-0934	A-71505-0104	15-83-0954	A-71505-0204	4	28.45	1.120	21.59	.850	16.76	.660	11.43	.450	24.38	.960	19.51	.768
15-83-0906	A-71505-0006	15-83-0936	A-71505-0106	15-83-0956	A-71505-0206	6	30.99	1.220	24.13	.950	19.30	.760	13.97	.550	26.92	1.060	22.05	.868
15-83-0908	A-71505-0008	15-83-0938	A-71505-0108	15-83-0958	A-71505-0208	8	33.53	1.320	26.67	1.050	21.84	.860	16.51	.650	29.46	1.160	24.59	.968
15-83-0916	A-71505-0016	15-83-0946	A-71505-0116	15-83-0966	A-71505-0216	16	43.69	1.720	36.83	1.450	32.00	1.260	26.67	1.050	39.62	1.560	34.75	1.368



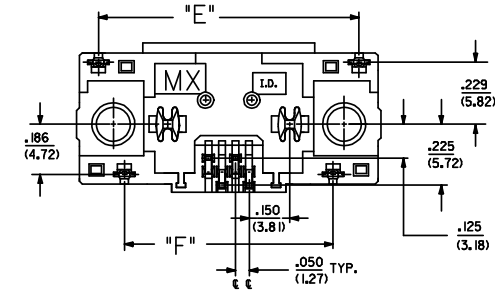
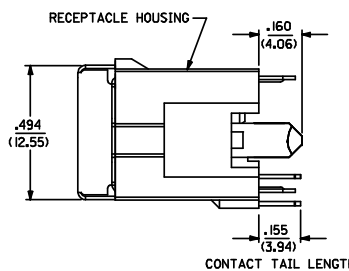
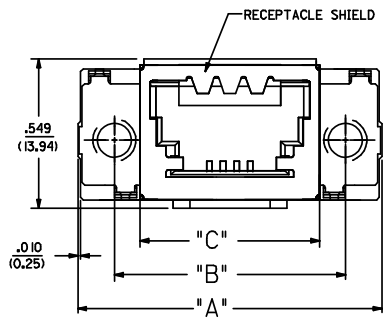
KEYING OPTION "1"
A-71505-01**



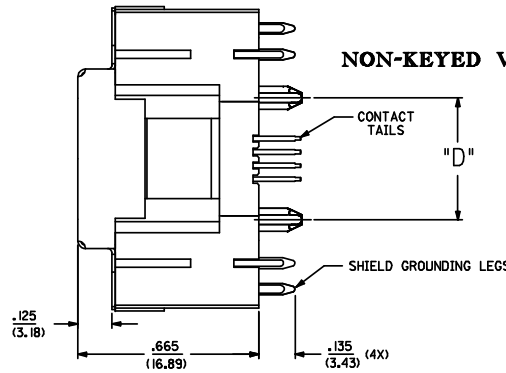
KEYING OPTION "2"
A-71505-02**



RECOMMENDED P.C.B. LAYOUT
RECEPTACLE SIDE SHOWN



- NOTES:**
- FOR ILLUSTRATION PURPOSES, THE 4 CKT NON-KEYED VERSION IS SHOWN.
 - MATERIAL:**
HOUSING: GLASS FILLED LIQUID CRYSTAL POLYMER (LCP), UL94 V-0, COLOR: BLACK.
CONTACTS: PHOSPHOR BRONZE
SHIELD: BRASS
 - PLATING:**
SHIELD: (2.54 MICROMETER)/100 MICROINCH BRIGHT TIN OVER NICKEL.
CONTACTS: PHOSPHOR BRONZE
SELECTIVE GOLD (Au) IN THE CONTACT AREA:
THICKNESS=(1.27 MICROMETER)/50 MICROINCH MINIMUM;
SELECTIVE TIN ONLY IN THE PC TAIL AREA:
THICKNESS=(2.54 MICROMETER)/100 MICROINCH MINIMUM;
NICKEL (Ni) UNDERPLATE OVER ENTIRE PIN.
 - CONFORMS TO MOLEX PRODUCT SPEC. PS-71350A.
 - REFER TO PK-70873-0257 FOR STD. PACKAGING.
 - PCB THICKNESS: .057" (1.45mm) to .100" (2.54mm)



NON-KEYED VERSION SHOWN

ADDED NOTE 6 EC NO: E2008-0300 DR: WALTERMAN 2008/02/04 CHKD: 2008/02/06 APPR: BWA/GURE 2008/02/06	QUALITY SYMBOLS ▽=0 ▽=0	GENERAL TOLERANCES (UNLESS SPECIFIED) mm INCH 4 PLACES ± --- ± --- 3 PLACES ± --- ± .010 2 PLACES ± 0.25 ± .014 1 PLACE ± 0.36 ± --- ANGULAR ±1/2°	DIMENSION STYLE IN/MM	SCALE 4:1	DESIGN UNITS METRIC	THIRD ANGLE PROJECTION	
	DRAWN BY: KJ DATE: 2/10/89 CHECKED BY: KJ DATE: 2/10/89 APPROVED BY: MM DATE: 2/10/89	TITLE SALES ASSY - SEMCONN SHIELDED VER RECP WITH GROUND PEGS		MATERIAL NO. SEE CHART		DOCUMENT NO. SDA-71505-0***	SHEET NO. 1 OF 1
	DRAFT WHERE APPLICABLE MUST REMAIN WITHIN DIMENSIONS			THIS DRAWING CONTAINS INFORMATION THAT IS PROPRIETARY TO MOLEX INCORPORATED AND SHOULD NOT BE USED WITHOUT WRITTEN PERMISSION			
	MOLEX MOLEX INCORPORATED						